



Certificate of Analysis

Company: Sterling Mountain Organics

PO Box 462

Johnson, VT 05656

Customer ID: 190906-8

Grower License #: NA

Sample ID: SMO #4546219902

Lot: NA

Matrix: Oil

Date Sampled: NA

Date Received: 3/26/2021

Report Date: 4/2/2021

Date Analyzed: 3/30/2021

Analyst: SCG

Report ID: C210326AD

Cannabinoid Summary

Cannabinoid Profile	LOQ (mg/g)	Concentration (mg/g)	Weight (%)
CBDVA	0.0005	<LOQ	<LOQ
CBDV	0.0012	0.49	0.05
CBDA	0.0008	<LOQ	<LOQ
CBGA	0.0008	<LOQ	<LOQ
CBG	0.0019	1.30	0.13
CBD	0.0019	53.14	5.31
THCV	0.0021	<LOQ	<LOQ
CBN	0.0013	0.10	0.01
Δ9-THC	0.0020	1.11	0.11
Δ8-THC	0.0019	<LOQ	<LOQ
THC-A	0.0034	<LOQ	<LOQ
CBC	0.0024	2.30	0.23
Total THC		1.11	0.11
Total CBD		53.14	5.31
Total Cannabinoids		58.45	5.84

0.11%

Total THC

5.31%

Total CBD

5.84%

**Total
Cannabinoids**

0.11%

Δ9-THC

N/A

**Percent
Moisture**

1 : 48

**THC : CBD
Ratio**

Cannabinoids Methodology: High Performance Liquid Chromatography (HPLC) using PerkinElmer FLEXAR™ with Photo Diode Array Detector (PDA)

Total CBD and total THC are calculated values, to account for assumed decarboxylation from the acid form (THCA or CBDA) to the neutral form, causing weight loss of the acid group.

These values are calculated as follows:

Total THC = (THCA x 0.877) + Δ9-THC

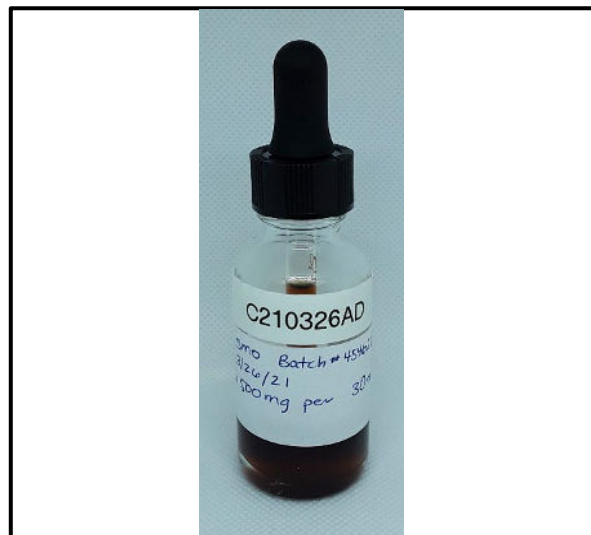
Total CBD = (CBDA x 0.877) + CBD

Ratio of Total CBD: Total THC

Reagent Blanks: < LOQs for all analytes

LOQ = The lowest quantity that this method can reliably detect. Any cannabinoid that was not detected is assumed to be less than the stated LOQ (<LOQ).

All results reflect dry weight of material, based on % moisture of the sample.



This report shall not be reproduced except in full without approval of the laboratory. This is to provide assurance that parts of a report are not taken out of context. Results apply to the samples as received.